



FNINR

Nightingale Gala

2019

WEDNESDAY, OCTOBER 23, 2019
at the RITZ CARLTON HOTEL

1150 22ND STREET, N.W.,
WASHINGTON, D.C. 20037

FRIENDS OF THE NATIONAL
INSTITUTE *of* NURSING RESEARCH



Researcher Fang Yu, PhD, RN, GNP-BC, FGSA, FAAN, is discovering the role exercise plays in delaying dementia symptoms.

Driven to improve lives through research

At the University of Minnesota School of Nursing, our innovative research and evidence-based practice projects are addressing health issues across the life span in local, state, national and global contexts.

Research Areas of Excellence

- » Health promotion among vulnerable populations
- » Prevention and management of chronic health conditions
- » Symptom management
- » Health/nursing informatics and systems innovation



SCHOOL OF NURSING

UNIVERSITY OF MINNESOTA

celebrating
110
YEARS

The first nursing
program established
within a university

nursing.umn.edu/research

FRIENDS OF THE NATIONAL INSTITUTE OF NURSING RESEARCH

FNINR's VISION is to be a bold voice to communicate the impact of NINR's work to elevate nursing science, improve lives and advance the Nation's health.

FNINR's MISSION is to provide resources to support nursing research and advance the mission of the NINR. The Friends seek to support research-based nursing practice by educating nursing professionals and the public about the advances made through nursing research and its benefits to patients, families, the community and the delivery of healthcare.

The Friends of the National Institute of Nursing Research (FNINR) is an independent, non-profit organization founded in 1993. Nurse researchers are grounded in clinical nursing practice and focused on the physical, mental, emotional and social needs of patients. They recognize the illness and the presence of health risk factors affecting the overall well-being of individuals.

The healthcare community faces new challenges and opportunities to improve patient care each year. With the continuing leadership provided by NINR and the support of FNINR, nurse researchers will continue to contribute to the enhanced health and well-being of all Americans, especially in a time when cost-effectiveness and quality of care are equally championed by the public and the Nation's decision makers.

NATIONAL INSTITUTE OF NURSING RESEARCH

The National Institute of Nursing Research (NINR) was established as a Center at the National Institutes of Health (NIH) and as an Institute in 1986. This placement among the 27 Institutes and Centers within the NIH has added a new scientific perspective to enrich the Nation's biomedical and behavioral research endeavors.

NINR's mission is to promote and improve the health of individuals, families, communities, and populations. The mission is accomplished through support of research in scientific areas such as chronic and acute diseases, health promotion and maintenance, symptom management, health disparities, caregiving, self-management, and the end of life. NINR also supports the training of new investigators who bring new ideas and help to further expand research programs. The ultimate goal of NINR's research is its dissemination into clinical practice and into the daily lives of individuals and families.

Welcome

TO FNINR'S NIGHTINGALA



FNINR PRESIDENT CONNIE W. DELANEY, PHD, RN, FAAN, FACMI

2019: YEAR OF THE NURSE

Welcome to the 2019 NightinGala. On behalf of the FNINR Board of Directors, we are grateful to join together on this shared occasion to applaud our researchers, the impact of nursing science on improving daily lives, and advancing our nation's health.

We continue to boldly advance the 26 year legacy of FNINR's mission to support nursing research and advance the mission of NINR. We are committed to supporting research-based nursing practice by educating nursing professionals and the public about the impact of nursing research on individuals, families, communities, and populations as well as the delivery of health care. More than ever, your presence demonstrates your engagement and bold and energetic support for the work of NINR, the evolution of FNINR, and the support of NIH.

Tonight is a celebration of remarkable scientific leadership, teams and partnerships required for discovery, and the import of dissemination, translation, and impact on improving health. Tonight we celebrate the strength of FNINR and our gratitude to Dove & Associates for their management service to FNINR, while we extend a warm welcome to AMR Management Services and our Executive Director Liz Fossett. Join me in thanking the leadership and commitment of the FNINR Board, especially Past President Karen Drenkard, in fostering a seamless transition in association management, advancing the awards programming, and fostering an empowered ambassadors and advocacy program. Together we build on the profound FNINR legacy of foresight, courage, and growth.

Thank you for your commitment to Advancing the Legacy. Enjoy.

In gratitude,

A handwritten signature in dark ink that reads "Connie W. Delaney". The signature is written in a cursive style with a loop at the end.

Program

WELCOME AND OPENING REMARKS

FNINR President Connie W. Delaney, PhD, RN, FAAN, FACMI

NINR-RESEARCH PRESENTATIONS

DINNER

FNINR AT WORK

Presented by: *Cindy L. Munro, PhD, RN, ANP-BC, FAANP, FAAN, FAAS*

FNINR 2019 AWARDS

Faye Glenn Abdellah Leadership Award–Nancy Woods

Ada Sue Hinshaw Award–Patricia Stone

Welch Woerner Path Paver Award–Susan Dorsey

Protégé Award–Amanda Fallin–Bennett

Presented by *Kathleen Potempa, PhD, RN, FAAN*

CLOSING REMARKS

FNINR President Connie W. Delaney, PhD, RN, FAAN, FACMI



FNINR 2019 BOARD OF DIRECTORS

President

Connie W. Delaney, PhD, RN,
FAAN, FACMI, FNAP
*Dean and Professor, University of
Minnesota School of Nursing*

Secretary

Dorrie Fontaine, RN, PhD,
FAAN
*Emeritus, Sadie Heath Cabaniss
Professor of Nursing and Dean,
University of Virginia School of
Nursing*

Treasurer

Cathleen Wheatley, DNP, RN,
CENP
*President, Wake Forest Baptist
Medical Center
WFBH System Chief Nurse
Executive, Sr. Vice President of
Clinical Operations*

Immediate Past President

Karen Drenkard, PhD, RN,
NEA-BC, FAAN
*Associate Dean, Clinical Practice
& Community Engagement
The George Washington University
School of Nursing*

DIRECTORS

Jean Davis, PhD, RN,
FAAN
*PhD Program Director and
Professor University of South
Carolina College of Nursing*

Azita Emami, PhD. MSN,
RNT, RN, FAAN
*Executive Dean
University of Washington
School of Nursing*

Janie Heath PhD, APRN-
BC, FAAN, FNAP,
FAANP
*Dean and Warwick Professor
of Nursing
University of Kentucky
College of Nursing*

Pamela O. Johnson, MS,
RN, NEA-BC, FAAN
*Chief Nursing Officer
Mayo Clinic*

Jerry A. Mansfield, PhD,
RN, NEA-BC
*Executive Chief Nursing
Officer and Chief Patient
Experience Officer
Medical University of South
Carolina*

Molly K. McCarthy, RN,
MBA
*Chief Nursing Strategist
Microsoft US Health & Life
Sciences*

Cindy L. Munro, PhD, RN,
ANP-BC, FAAN, FAANP,
FAAAS
*Dean and Professor, School of
Nursing and Health Studies
University of Miami*

Victoria Niederhauser,
DrPH, RN, PPCNP-BC,
FAAN
*Dean and Professor
University of Tennessee
Knoxville College of Nursing*

Linda D. Norman, DSN,
RN, FAAN
*Dean and Valere Potter
Menefee Professor of Nursing
Vanderbilt University School
of Nursing*

Carol Porter, DNP, RN,
FAAN
*Chief Nursing Officer and
Senior Vice President
University of Texas, MD
Anderson Cancer Center*

Kathleen Potempa, PhD,
RN, FAAN
*Professor
University of Michigan
School of Nursing*

Roy L. Simpson, DNP, RN,
DPNAP, FAAN, FACMI
*Clinical Professor, Assistant
Dean, Information
Technology Management
Emory University, Nell
Hodgson Woodruff School
of Nursing*

Sandra J. Weiss, PhD,
DNSc, FAAN
*Professor and Eschbach
Endowed Chair
UCSF School of Nursing*

BOARD LIAISON

Yvonne E. Bryan, PhD
*Deputy Director, Division of
Extramural Science Programs
Chief, Office of Extramural
Research Administration
National Institute of Nursing
Research, National Institutes
of Health*





FNINR FOUNDING MEMBERS

FAYE GLENN ABDELLAH, *EdD, ScD, RN, FAAN*

COLLEEN CONWAY-WELCH, *PhD, CMN, RN, FAAN*

JOYCE FITZPATRICK, *PhD, MBA, RN, FAAN*

MARYANN F. FRALIC, *DrPH, RN, FAAN*

DIANE K. KJERVIK, *JD, RN, FAAN*

ORA STRICKLAND, *PhD, RN, FAAN*

NELL WATTS, *MS, RN, FAAN*

RUBY L. WILSON, *EdD, RN, FAAN*

LOUISE WOERNER, *MBA*

NANCY FUGATE WOODS, *PhD, RN, FAAN*

FNINR EMERITUS BOARD of DIRECTORS

FAYE GLENN ABDELLAH, *EdD, ScD, RN, FAAN*

ROGER BULGER, *MD*

COLLEEN CONWAY-WELCH, *PhD, CMN, RN, FAAN*

GREGORY EASTWOOD, *MD*

MELISSA A. FITZPATRICK, *RN, MSN, FAAN*

MARYANN F. FRALIC, *DrPH, RN, FAAN*

FRANKLIN A. SHAFFER, *EdD, RN, FAAN, FFNMRC SI*

NANCY VALENTINE, *PhD, MPH, RN, FAAN*

NYU MEYERS

A global leader in
advancing health for all
people where they live,
play, learn, and work.



NYU

**RORY MEYERS
COLLEGE OF NURSING**

nursing.nyu.edu



Table Hosts

AS OF 9/15/19

American Association of Colleges of Nursing

Boston College Connell School of Nursing

Case Western Reserve University

CGFNS International, Inc

Columbia University School of Nursing

Drexel University College of Nursing & Health Professions

Duke University School of Nursing

Emory University, Nell Hodgson Woodruff School of Nursing

Florida Atlantic University

George Mason University

George Washington University

Georgetown University School of Nursing & Health Studies

Georgia State University School of Nursing

GetWellNetwork

Goldfarb School of Nursing at Barnes-Jewish College

Hofstra University

Indiana University School of Nursing

Inova Health System

Jefferson College of Nursing

Johns Hopkins University School of Nursing

Mayo Clinic

Michigan State University, College of Nursing

National Council of State Boards of Nursing

National League for Nursing

New York University Rory Meyers College of Nursing

Ohio State University College of Nursing

Oncology Nursing Society

Pennsylvania State University College of Nursing

Rush University

Rutgers University School of Nursing

RWJF Future of Nursing Scholars program - University of Pennsylvania School of Nursing

Uniformed Services University of the Health Sciences

University of Alabama at Birmingham School of Nursing

University of Arkansas for Medical Science, School of Nursing

University of California, San Francisco

University of Connecticut School of Nursing

University of Delaware School of Nursing

University of Florida College of Nursing

University of Illinois at Chicago College of Nursing

University of Iowa College of Nursing

University of Kansas School of Nursing

University of Kentucky College of Nursing

University of Maryland School of Nursing

University of Miami

University of Michigan

University of North Carolina at Chapel Hill School of Nursing

University of Pennsylvania School of Nursing

University of Pittsburgh

University of Rhode Island

University of South Florida College of Nursing

University of Tennessee College of Nursing

University of Tennessee Health Science Center - Memphis, TN

University of Texas at Austin

University of Texas Health Cizik School of Nursing

University of Texas Health School of Nursing San Antonio

University of Texas MD Anderson Cancer Center

University of Utah College of Nursing

University of Virginia School of Nursing

University of Washington School of Nursing

University of Wisconsin School of Nursing

Vanderbilt University School of Nursing

Villanova University M. Louise Fitzpatrick College of Nursing

Virginia Commonwealth University School of Nursing

Wake Forest Baptist Health

Yale School of Nursing



LEAD

GOLDFARB SCHOOL *of* NURSING

- DNP** Doctor of Nursing Practice
- PhD** Doctor of Philosophy in Nursing

With our doctoral degree programs, nurses interested in pursuing advanced leadership roles in practice and research can pursue their passion in academia as well as in health care institutions and hospitals. Become the leader you are meant to be at Goldfarb School of Nursing at Barnes-Jewish College.



BROADEN YOUR IMPACT AT
BarnesJewishCollege.edu



At Mayo Clinic, you will be part of an amazing team committed to solving the most serious and complex health care challenges – one patient at a time.

- Over \$490 million in extramural research awards, supplemented with over \$330 million of institutional support.
- 4,878 staff physicians and scientists at Mayo Clinic
- 65,214 total staff with 13,312 nurses enterprise-wide
- Mayo Clinic has received Magnet® designation 5 times
- Total clinic patients: 1.3 million



Nurse Scientists conduct clinically relevant research that directly impacts patient outcomes. Nurse Scientist opportunities are available on Mayo Clinic campuses in Rochester, MN and Phoenix, AZ. A trajectory of extramural grant funding and robust publication record is expected. Applicants must have a PhD and be licensed as a registered nurse in the U.S. To learn more visit: jobs.mayoclinic.org and reference postings **114985BR** and **114986BR** or www.mayoclinic.org/nursingresearch

Linda L. Chlan, Ph.D., R.N., ATSF, FAAN
 Associate Dean for Nursing Research
 c/o Jennifer Schilbe
schilbe.jennifer@mayo.edu or 507-266-6214





Many of the greatest minds in cancer research are at The University of Texas MD Anderson Cancer Center.

With one of the largest clinical trial programs in the world, MD Anderson offers a collaborative environment that accelerates our mission to end cancer. Our community of 3,700+ nurses includes more than 200 research nurses and 500 APRNs who are integral members of interdisciplinary teams. They lead the way in setting standards for innovative cancer care, including advances in immunotherapy and personalized medicine. Our research nurse residency and APRN fellowship are the first of their kind in the nation, placing the nurse at the forefront of cutting-edge cancer treatment development.

Dedication to cancer care, research, education and prevention is why MD Anderson has been named one of the top two hospitals for cancer care since the U.S. News & World Report's "Best Hospitals" survey began in 1990 and has maintained ANCC Magnet Recognition Program designation consistently since 2001.

For more information, visit www.mdanderson.org.

Supported by The Argyros Family Foundation Nursing Research Endowment

THE UNIVERSITY OF TEXAS
MD Anderson
Cancer Center
 Making Cancer History®



Transformative research and evidence-based practice to transform healthcare and improve lives

nearly **\$11 million** in sponsored research funding in FY2019

Martha S. Pitzer Center for Women, Children and Youth



Center for Healthy Aging, Self-Management and Complex Care

Helene Fuld Health Trust National Institute for Evidence-based Practice in Nursing and Healthcare



 **THE OHIO STATE UNIVERSITY**
 COLLEGE OF NURSING

Transforming health, transforming lives
nursing.osu.edu

2019 FNINR

Awards

FAYE GLENN ABDELLAH LEADERSHIP AWARD

The Faye Glenn Abdellah Leadership Award is presented to an organization or individual with a sustained or lasting impact on nursing science either through advocacy, institutional leadership, or individual program of research that has led to the public awareness of the value of nursing science in improving health at the individual and/or population levels.

ADA SUE HINSHAW AWARD

The Ada Sue Hinshaw Award is the preeminent award given by FNINR in honor of the first permanent Director of the National Institute of Nursing Research, acknowledging the substantive and sustained program of science that affords the recipient recognition as a prominent senior scientist.

WELCH/WOERNER PATH-PAVER AWARD

The Welch/Woerner Path-Paver Award is given to a mid-to-late career nurse scientist who has achieved one or more breakthroughs in theory development, research methods, instruments, or subject matter that has paved the way for other scientists and who has influenced and mentored the next generation of nurse researchers.

PROTÉGÉ AWARD

The Protégé Award is given to an evolving nurse scientist who shows great promise in advancing science and who is within the first six years of completing either PhD or Post-Doctoral study.



THE *Faye Glenn Abdellah* LEADERSHIP AWARD



NANCY
FUGATE
WOODS

PhD, RN,
FAAN

Nancy Fugate Woods, PhD, RN, FAAN, has led a sustained program of research in the field of women's health. She has contributed to symptom science since the 1970s when she began investigating symptoms among community-dwelling reproductive-aged women using a health diary for longitudinal data collection. She and colleagues conducted the first prevalence study of perimenstrual symptoms in the US, and subsequently identified a variety of symptom patterns women experienced across the menstrual cycle. This early work led to a program of studies focusing on symptoms women experience during various stages of the menstrual cycle and during the menopausal transition. Her collaborative, interdisciplinary research has resulted in an improved understanding of women's experiences of menstrual cycle symptoms as well as the menopausal transition, including endocrine, social, personal and genetic factors influencing symptoms and women's approaches to symptom management. In 1989 Dr. Woods and her colleague, Dr. Joan Shaver, established the first NIH-funded Center for Women's Health Research at the University of Washington School of Nursing. With Dr. Ellen Mitchell she established the Seattle Midlife Women's Health Study, a longitudinal study of women during the menopausal transition and early postmenopause, including follow-up for up to 20 years. She is an investigator for the Women's Health Initiative Study, studying both frailty and aging well in this large population of aging women, and for the MsFLASH study of symptom management approaches for hot flashes and related symptoms. Her recent research has focused on women's experiences of symptom clusters, and the genetic and endocrine biomarkers and stressors and social resources associated with these as well as women's reports of and their heuristics related to their symptom clusters. Through her leadership of predoctoral and postdoctoral training efforts and mentorship of early nurse faculty scholars she has advanced the careers of numerous women's health scholars.

Dr. Woods has served as president of the American Academy of Nursing, the North American Menopause Society, and the Society for Menstrual Cycle Research. She was honored with the American Nurses Foundation Distinguished Contribution to Nursing Research Award and the Pathfinder Award from the Friends of the National Institute for Nursing Research. She helped set research agendas for women's health as a member of the National Institutes of Health Women's Health Task Force and Office of Women's Health Research Advisory Council and served on the National Advisory Council on Nursing Research of the National Institute of Nursing Research. The United States Public Health Service Office of Women's Health presented her with the Trailblazer Award in 2016 for her leadership and research in women's health. In 2017 she was named a Living Legend by the American Academy of Nursing. She has been a strong advocate for diversity, inclusion, and equity in the nursing profession and discipline, including during her service as Dean of the University of Washington School of Nursing from 2008-2018.

Dr. Woods was elected to the Institute of Medicine (now National Academy of Medicine) and to the American Academy of Nursing for her research, education, and advocacy advancing women's health. She was elected to fellowship in the Gerontological Society of America based on her research with midlife and older women. She was awarded honorary doctoral degrees from the University of Pennsylvania, the University of Haifa, Israel, and Chiang Mai University, Thailand. She earned a B.S. in Nursing from the University of Wisconsin, Eau Claire, in 1968; a M.N. from the University of Washington in 1969; and a Ph.D. in epidemiology from the University of North Carolina, Chapel Hill, in 1978.

THE *Ada Sue Hinshaw* AWARD



PATRICIA
STONE

PhD, RN,
FAAN

Pat Stone is the Centennial Professor of Health Policy at Columbia University School of Nursing. She earned her PhD from the University of Rochester and then completed post-doctoral training at Harvard University. Dr. Stone is known for her rigorous comparative effectiveness and cost effectiveness research that improves the quality of care for older adults. Results of her program of research have been disseminated in over 200 publications which have been frequently cited over 14,000 times.

Dr. Stone's early research examined how the work environment of intensive care nurses impacted the safety of elderly, critically ill patients and the prevention of healthcare associated infections. In this ground-breaking study, she compiled national data from different sources and found that what was safe for the elderly patient, was also safe for the nurses and good for the hospital. She led an interdisciplinary group of scientists who developed an integrative model of staff working conditions and safety, which has influenced The Joint Commission's global patient safety recommendations.

Dr. Stone has also assessed best practice for infection prevention and control in hospitals across the nation and the cost-effectiveness of these practices. Her interdisciplinary team found that having a clinical guideline in place was insufficient because clinicians' adherence was key to the prevention of infections. In fact, when multifaceted prevention efforts were in place to promote adherence, hospitals saved money. Furthermore, her team found that statewide mandatory reporting of healthcare associated infections was associated with reductions in such infections. These findings influenced national mandatory reporting efforts.

Currently, Dr. Stone is examining best practices in infection prevention efforts in nursing homes and in home healthcare settings. Her team found that 1.3 to 2.7 million infections occur each year in nursing homes, 40% of nursing homes get an infection control deficiency citation, and less than half have written guidelines for antibiotic stewardship. Because of the over prescribing of antibiotics in longterm care, she has also investigated the integration of infection management and palliative care. With the unique attributes of home healthcare, her team is finding infection prevention even more difficult, despite the fact that home healthcare nurses are increasingly caring for acutely ill patients.

Dr. Stone also leads the NINR funded "Comparative and Cost-Effectiveness Training for Nurse Scientists" and the "Center for Improving Palliative Care for Adults with Multiple Chronic Conditions". While Dr. Stone maintains an active program of research, her passion is teaching the next generation of nurse scientists how to lead interdisciplinary research teams to generate knowledge and influence health policy with the ultimate goal of improving population health.

THE
WELCH/WOERNER

Path-Saver AWARD



SUSAN
DORSEY

PhD, RN,
FAAN

Dr. Dorsey PhD RN FAAN is Professor and Founding Chair of the Department of Pain and Translational Symptom Science at the University of Maryland, Baltimore, School of Nursing and Co-Director of the University of Maryland Center to Advance Chronic Pain Research. She holds secondary faculty appointments in the School of Medicine Department of Anesthesiology and the School of Dentistry Neural & Pain Sciences Department. She is highly committed to interdisciplinary and team-based science, which is reflected in her affiliate faculty positions within the Institute for Genome Sciences, Greenebaum Comprehensive Cancer Center, the campus-wide Graduate Program in Life Sciences, and the Program in Genetics and Genomic Medicine at the University of Maryland School of Medicine. Dr. Dorsey co-directs the campus-wide Center to Advance Chronic Pain Research and she serves as a Multiple Principal Investigator for the NINR-funded P30 Omics Associated with Self-Management Interventions for Symptoms (OASIS) Center.

Throughout her professional career and in these roles, Dr. Dorsey has been a pioneer, trendsetter, and consistently on the cutting edge of developing multiomic methods and analytic strategies to advance the science of nursing. Her efforts in integrating big data multiomic methods into nursing research and practice have led to new discoveries in the genomics of neuromuscular weakness in muscular dystrophy and the transition from acute to chronic pain across numerous conditions. The translational potential of her work has led to nearly \$27M in NIH funding, numerous publications and honors and awards. Evidence of her impact is also seen in the professional service roles that she has undertaken, including membership on editorial boards of nursing and non-nursing journals, guest editor of a special edition of *Nursing Research* on precision health, and she reviews on an ad hoc basis for numerous interdisciplinary journals.

She also routinely serves on NIH study sections including standing membership on the NINR NRRC training grant panel. Her work has inspired a generation of nurse researchers who are equipped to harness the power of big data in their own trajectory of research and set a whole new caliber of nursing leadership in the use of big data for multiomic research, innovation and discovery.

THE *Protege* AWARD



AMANDA
FALLIN-
BENNETT

PhD, RN

Amanda Fallin-Bennett, PhD, RN, is an Assistant Professor in the University of Kentucky (UK) College of Nursing, the Co-Director of the Perinatal Research and Wellness Center, and a faculty associate of the BREATHE research team. Dr. Fallin-Bennett received her BSN and PhD from UK and completed a three-year postdoctoral fellowship at the University of California San Francisco Center for Tobacco Control Research and Education. Her program of research focuses on tobacco and substance use among vulnerable populations, including pregnant and parenting women, sexual and gender minorities, and people living in rural areas. Early in her faculty career at UK, she earned a position as a K12 scholar in the NIDA-funded Building Research Careers in Women's Health program. She led a large-scale, community engaged qualitative study to explore tobacco treatment among pregnant and parenting women with substance use disorders. Dr. Fallin-Bennett was also the PI or Multi-PI on six other studies focusing on tobacco treatment for pregnant and post-partum women, one of which is a NIDA funded R34 involving the nationally recognized PATHways/Beyond Birth program for women with opioid use disorder. She applied her passion for vulnerable populations to the disparities in tobacco use in the Southeast US region and received a prestigious R01/R37 merit award from NCI. The overarching goal of the study is to understand the barriers to progress in adoption of smoke-free laws in rural, southern municipalities to inform advocacy strategies. Successful completion of this project will shift the current research paradigm to a new way of understanding smoke-free law development in these areas, and ultimately, reduce tobacco use disparities. Dr. Fallin-Bennett has also found a home for the integration of her academic pursuits and service to her community as co-founder and Program Director of Voices of Hope, a recovery community organization that helps people in early recovery from drug and alcohol addiction stay in recovery. In her role at Voices of Hope, Dr. Fallin-Bennett developed, implemented, and evaluated peer-delivered recovery support services. Her work there became a prime example of true translational research when she became a Co-I on the NIDA funded \$87 million HEAL (Helping End Addiction Long-term) grant to reduce opioid use related morbidity and mortality in Kentucky- one of the most heavily affected areas of the country. She will leverage her role at Voices of Hope to provide and measure recovery support services and promote community-based engagement.

2019 FNINR AMBASSADORS

KRISTEN ASHFORD

PhD, WHNP-BC, FAAN
University of Kentucky College of
Nursing

DIANNE MORRISON-BEEDY

PhD, RN, WHNP, FAANP, FNAP,
FAAN
The Ohio State University

DONNA Z. BLISS

PhD, RN, FAAN, FGSA
University of Minnesota School of
Nursing

ROSINA CIANELLI

PhD, MPH, RN, IBCLC, FAAN
University of Miami, School of
Nursing and Health

MOLLIE CUMMINS

MSN, PhD, RN, FAAN, FACMI
University of Utah College of
Nursing

JEAN DAVIS

PhD, RN, FAAN
Goldfarb School of Nursing at
Barnes Jewish College

PATRICIA M. DAVIDSON

PhD, MEd, RN, FAAN
Johns Hopkins School of Nursing

LADAN ESHKEVARI

PhD, CRNA, L.A.c, FAAN
Georgetown University School of
Nursing and Health Studies

LINDA FLYNN

PhD, RN, FAAN
Rutgers, The State University of
New Jersey, School of Nursing

HURDIS M. GRIFFITH

PhD, RN, FAAN
Rutgers, The State University of
New Jersey, School of Nursing

ELLEN HAHN

PhD, RN, FAAN
University of Kentucky College of
Nursing

PHYLLIS HANSELL

EdD, RN, FNAP, FAAN
Seton Hall University

TRACIE CULP HARRISON

PhD, RN, FAAN, FGSLA
The University of Texas at Austin

KATHLEEN T. HICKEY

EdD, FNP-BC, ANP-BC, CCRN,
APNG, FAHA, FAAN
Columbia University

DEBORAH J. KENNY

PhD, RN, FAAN
University of Colorado at Colorado
Springs

USHA MENON

PhD, RN, FAAN
University of South Florida College
of Nursing

VICTORIA MENZIES

PhD, RN, PMHCNS-BC, FAAN
University of Florida School of
Nursing

PAMELA H. MITCHELL

PhD, RN
University of Washington School of
Nursing

JENNIFER E. MOORE

PhD, RN
Institute for Medicaid Innovation

CINDY MUNRO

PhD, RN, ANP-BC, FAANP, FAAN,
FAAAS
University of Miami, School of
Nursing and Health Sciences

CHERYL A. KRAUSE-PARELLO

PhD, RN, FAAN
Florida Atlantic University

LUSINE POGHOSYAN

PhD, MPH, RN, FAAN
Columbia University School of
Nursing

NANCY S. REDEKER

PhD, RN, FAHA, FAAN
Yale University School of Nursing

VICTORIA RICH

PhD, RN, FAAN
University of South Florida School
of Nursing, Tampa

SUSAN CAROL SALADINO

PhD, RN
SUNY Downstate College of
Nursing

LAUREN SMITH

PhD, RN, FAAN
The Ohio State University College
of Nursing

ANGELA STARKWEATHER

PhD, ACNP-BC, CCRN, FAAN
University of Connecticut

CHERYL TAYLOR

PhD, RN, MN, FAAN
Southern University and A&M
College

DIANE M. TWEDELL

MCHS, DNP, RN, CENP, CNML
Mayo Clinic Health System

LINDA S. WEGLIICKI

PhD, RN
Medical University of South
Carolina

2019 FNINR COMMITTEES

ADVOCACY COMMITTEE

Cindy Munro, Chair
Ellen Hahn, Co-Chair
Sharron Crowder
Phyllis Hansell
Diane Morrison-Beedy
Jean Davis
Kathleen Hickey
Angela Starkweather

AWARDS COMMITTEE

Kate Potempa, Chair
Linda Norman, Co-Chair
Janie Heath
Margaret Heitkemper
Sandra Weiss

Jacquelyn Campbell
Ellen Lavoie Smith
Shannon Zenk
Lisa Carter-Harris
Terri Voepel-Lewis

BYLAWS COMMITTEE

Sandra Weiss, Chair
Victoria Niederhauser

FINANCE COMMITTEE

Cathleen Wheatley, Chair
Connie Delaney
Karen Drenkard
Molly McCarthy
Roy Simpson

NIGHTINGALA COMMITTEE

Connie Delaney, Chair
Karen Drenkard
Dorrie Fontaine
Cathleen Wheatley

NOMINATING COMMITTEE

Dorrie Fontaine, Chair
Karen Drenkard, Ex-Officio
Connie Delaney
Jerry Mansfield
Carol Porter



RUTGERS

School of Nursing

Faculty Career Opportunity

Senior Nursing Faculty

Division of Nursing Science

The Division of Nursing Science at Rutgers School of Nursing is seeking visionary leaders, with an established program of NIH-funded research, who will make solid contributions to the academic life of the faculty.

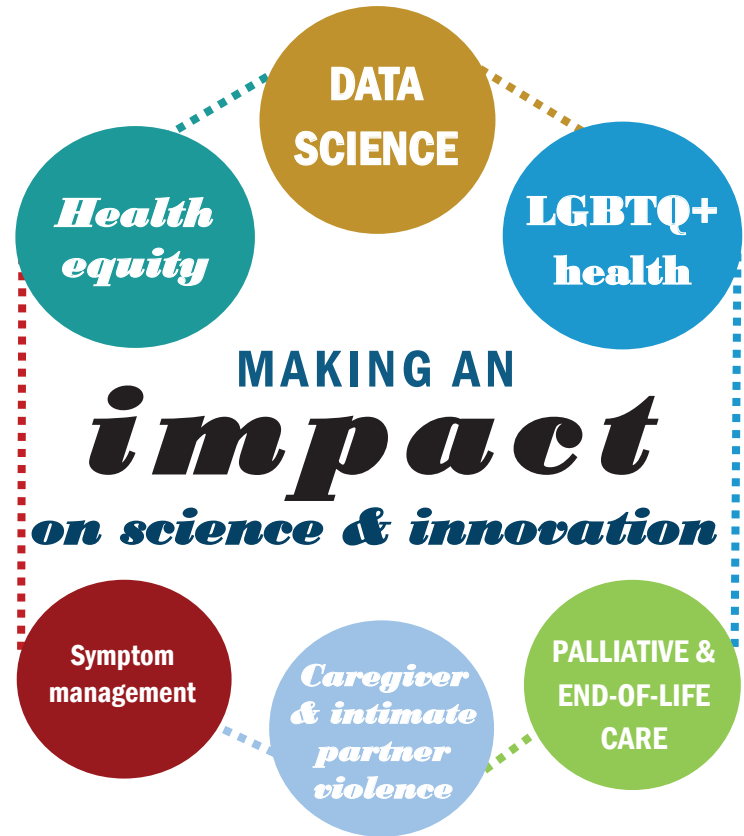
Successful candidates will demonstrate:

- Focused program of scholarship in a patient care specialty area
- PhD or related doctoral degree
- Significant external funding history as principal investigator
- Active federal funding research program (preferred)
- Expertise and commitment to advance nursing education and nursing science through research

For more information on faculty career opportunities and to apply online, please visit our website.

nursing.rutgers.edu/careers

Rutgers, The State University of New Jersey



MAKING AN
impact
on science & innovation

LEADERS. SCHOLARS. VISIONARIES. MENTORS.

And under the new leadership of 2-term
ANA president Dean Pamela Cipriano, we remain

NURSES AT THE TABLE.

Join us!



SCHOOL of NURSING

Thank You TO OUR SPONSORS

DISCOVERY SPONSORSHIP



INVESTIGATOR'S SPONSORSHIP



COLLEAGUE'S SPONSORSHIP



SCHOLAR'S SPONSORSHIP

